

DCW30R SERIES

Rail DC/DC Converters Single Output: 30 Watts



Features

- ◆ Designed to rail standards EN50155 & EN50121
- ◆ Rugged design for on-board train applications
- ◆ Wide input voltage range
- ◆ Convection / Conduction cooled: No fans
- ◆ Fully isolated input – output 3000VDC
- ◆ Over voltage protection
- ◆ Overload and short circuit protection
- ◆ MTBF > 150,000hrs
- ◆ Specials input / output combinations on request.
- ◆ Other mechanical styles on request.

General Specifications

Input Voltage	24VDC (15 ~ 34) 36VDC (22 ~ 51) 48VDC (29 ~ 67) 72VDC (43 ~ 101) 96VDC (58 ~ 135) 110VDC (66 ~ 154)
	◆ Other voltages on request
Input Protection	Reverse polarity protection. Inrush current limiting Lower voltage than specified will not damage unit
Isolation	Input - Output 3000vdc Input – Chassis 1500vdc Output – Chassis 1500vdc
Efficiency	Model dependent , typically 80-90%
Output voltage	See tables
Output Power	30 watts
Voltage Adjust.	Customer specified
Immunity	EN50155 & EN50121-3-2 EN61000-4-2 ESD EN61000-4-3 RF Immunity EN61000-4-4 Fast Transients EN50155 Surge & Voltage variations EN61000-4-6 Conducted Immunity
EMI	EN5022 Class B Conducted & Radiated
Switching Freq.	47kHz ±5kHz
Regulation	±1% Line / Load combined
Dynamic Response	Max ±5% diviation for 10% - 50% load step wuth 1msec recovery
Ripple & Noise	Typically 1% pk-pk or 0.2% RMS of output voltage (20MHZ BW)
Overload Protection	Current limiting, with hiccup type short-circuit protection
Overvoltage Protection	Double regulator loop &Tranzorb across output
Operating Temp.	-25°C to +70°C cold plate temperature
Cooling	Conduction cooling / Convection cooling
Environmental Protection	Ruggedizing and Conformal coating of PCB.
Shock & Vibration	IEC61373 Cat 1 A & B and Cat 2
Humidity	5-95% non-condensing, higher ration option
MTBF	>150,000 hrs

Description

The **DCW30R** series dc/dc converters are designed for use on Rail Rolling Stock and for many extremely harsh environments.

This rugged, industrial quality DC/DC converter uses a field proven topology to generate up to 30W continuous power.

It is a mature design with a track record in hundreds of applications. The series has large design headroom and it is rated for operation over a -25 to +70oC temperature range.

It is cooled by conduction via baseplate to a heatsinking surface and by natural convection. These models are fully ruggedized and conformal coated for immunity to shock, vibration, humidity, moisture, dust and insects.

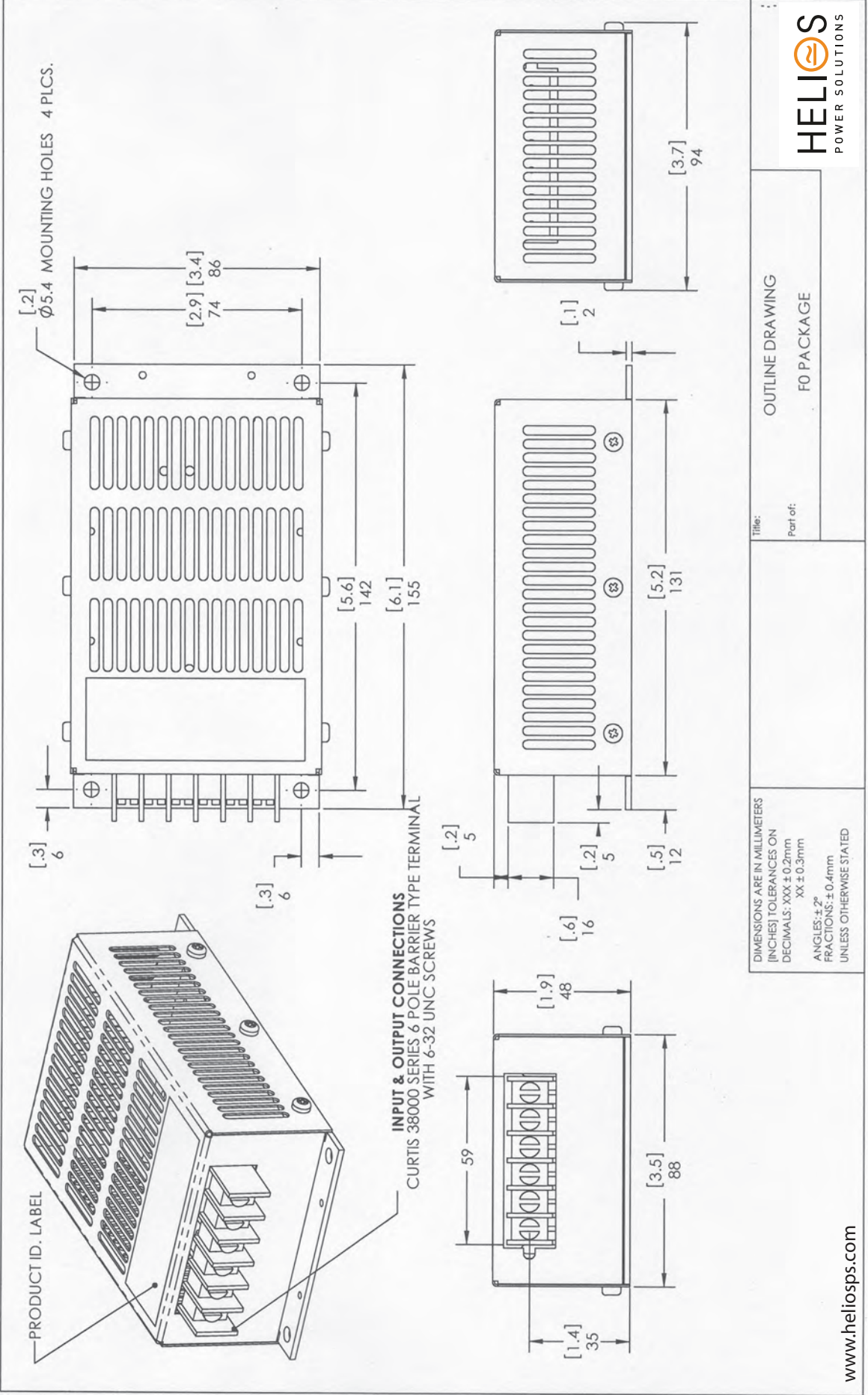
This chassis-mount design is optimized for low component count and high efficiency. The use of components with established reliability results in a high demonstrated MTBF.

Customized versions are also available.

Model	Input Options V	Output Options V A	Power W
DCW30R	24V, 36V	12V 2.5A	30W
	48V, 72V	24V 1.25A	
	96V, 110V	48V 0.63A	
		110V 0.27A	

- ◆ Final part numbers will be factory allocated to reflect customer input & output requirements.
- ◆ Any output from 12-125V is possible.

LED / Indicator	Optional
Alarm output	Optional on some models
Connector	6 pole barrier-type terminal block with 3/8"spacing. (optional cover)
Dimensions	94 x 48 x 160mm (F0) W x H x L (includes terminal block & mounting flanges)
Weight	0.6kg



DIMENSIONS ARE IN MILLIMETERS
 (INCHES) TOLERANCES ON
 DECIMALS: .XXX ± 0.2mm
 .XX ± 0.3mm
 ANGLES: ± 2°
 FRACTIONS: ± 0.4mm
 UNLESS OTHERWISE STATED

Title: OUTLINE DRAWING
 Part of: FO PACKAGE