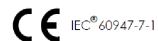


# INSTRUCTION SHEET

## UDJ125A/UDJ160A 569020/569030

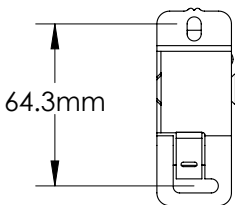
### NOTE:

1. Tighten screws of all unused galleries to the specified torque above.
2. For multiple phase assemblies, join blocks together before installing on DIN Profile.
3. The input must be fixed or maintained at approximately 15cm from the block.

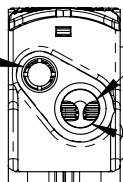


UDJ125A 569020	UDJ160A 569030
I = 125A	I = 160A
Ui = 1000V AC/DC Uimp = 12kV Ipk = 30kA	
Icw = 4.2kA rms @ 1sec	Icw = 11.8kA rms @ 1sec

Hex Sizes	
UDJ125A 569020	UDJ160A 569030
3,5 mm	3,6 mm



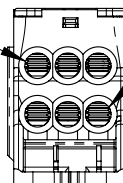
Size	Torque	Strip Length
	3.5N.m	14.7mm
6...25mm <sup>2</sup>		
	3.5N.m	14.7mm
6...16mm <sup>2</sup>		



UD125A		
Size	Torque	Strip Length
	8.5N.m	15.2mm
10...35mm <sup>2</sup>		

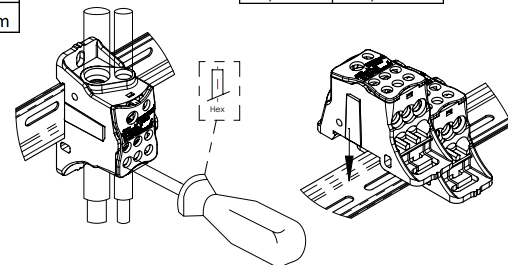
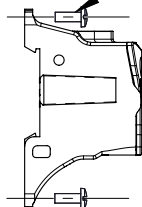
UD160A		
Size	Torque	Strip Length
	8.5N.m	15.2mm
10...70mm <sup>2</sup>		

Size	Torque	Strip Length
	3.5N.m	8.9mm
2.5...16mm <sup>2</sup>		



Size	Torque	Strip Length
	3.5N.m	11.4mm
2.5...16mm <sup>2</sup>		

M5



### WARNING:

1. Pentair products shall be installed and used only as indicated in Pentair product instruction sheets and training materials. Instruction sheets are available at [www.erico.pentair.com](http://www.erico.pentair.com) and from your Pentair customer service representative.
2. Pentair products must never be used for a purpose other than the purpose for which they were designed or in a manner that exceeds specified load ratings.
3. All instructions must be completely followed to ensure proper and safe installation and performance.
4. Improper installation, misuse, misapplication or other failure to completely follow Pentair's instructions and warnings may cause product malfunction, property damage, serious bodily injury and/or death, and void your warranty.

### SAFETY INSTRUCTIONS:

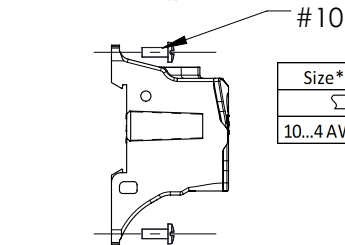
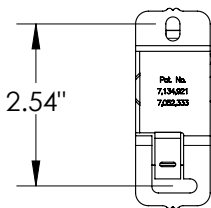
All governing codes and regulations and those required by the job site must be observed.  
Always use appropriate safety equipment such as eye protection, hard hat, and gloves as appropriate to the application.

Pentair, CADDY, ERICO CADWELD, ERICO CRITEC, ERICO, ERIFLEX, and LENTON are owned by Pentair or its global affiliates. All other trademarks are the property of their respective owners. Pentair reserves the right to change specifications without prior notice.

IEC is a registered trademark of International Electrotechnical Commission

# INSTRUCTION SHEET

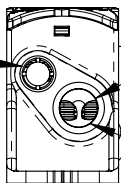
## UDJ125A/UDJ160A 569020/569030



- NOTE:
1. Tighten screws of all unused galleries to the specified torque above.
  2. For multiple phase assemblies, join blocks together before installing on DIN Profile.
  3. When protected by 200 ampere Class J or T fuse, this terminal block is rated for use on a circuit capable of delivering no more than 100kArms symmetrical amperes, 600 volts maximum.
  4. The conduit ends shall be provided with a plastic conduit bushing.

\*For Short Circuit Current Rating up to 100kA see UL file E198301

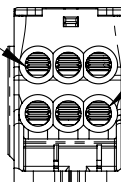
Size*	Torque	Strip Length
14...2AWG	31.0 in-lbs	0.58 in
14...10AWG	31.0 in-lbs	



UD125A		
Size*	Torque	Strip Length
8...1/0AWG	57.0 in-lbs	0.60 in

UD160A		
Size*	Torque	Strip Length
8...3/0 AWG	75.0 in-lbs	0.60 in

Size*	Torque	Strip Length
10...4 AWG	31.0 in-lbs	0.35 in

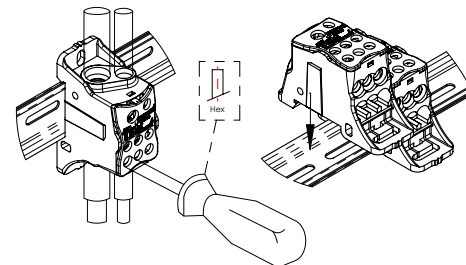


Size*	Torque	Strip Length
10...4 AWG	31.0 in-lbs	0.45 in



UDJ125A 569020	UDJ160A 569030
I = 150A	I = 200A
600V AC/DC	

Hex Sizes	
UDJ125A 569020	UDJ160A 569030
3,5 mm	3,6 mm



### WARNING:

1. Pentair products shall be installed and used only as indicated in Pentair product instruction sheets and training materials. Instruction sheets are available at [www.erico.pentair.com](http://www.erico.pentair.com) and from your Pentair customer service representative.
2. Pentair products must never be used for a purpose other than the purpose for which they were designed or in a manner that exceeds specified load ratings.
3. All instructions must be completely followed to ensure proper and safe installation and performance.
4. Improper installation, misuse, misapplication or other failure to completely follow Pentair's instructions and warnings may cause product malfunction, property damage, serious bodily injury and/or death, and void your warranty.

### SAFETY INSTRUCTIONS:

All governing codes and regulations and those required by the job site must be observed. Always use appropriate safety equipment such as eye protection, hard hat, and gloves as appropriate to the application.

cURus is a registered Recognized Component Mark of Underwriters Laboratories, Inc  
UL is a registered trademark of Underwriters Laboratories, Inc.  
CSA mark is a registered trademark of CSA Group Certification & Testing Inc.,

Pentair, CADDY, ERICO CADWELD, ERICO CRITEC, ERICO, ERIFLEX, and LENTON are owned by Pentair or its global affiliates. All other trademarks are the property of their respective owners. Pentair reserves the right to change specifications without prior notice.