

# GLAMOR

## THE POWER OF EXPERIENCE

450VA ~ 2000VA

Based on more than 20 years of experience in line-interactive technology, GLAMOR combines the most up-to-date technologies and the highest reliability of the market.



### PERFECT FOR:



Home



Shops



PC & Networks



Small Offices

## FEATURES



- Line-interactive simulated sinewave UPS
- Integrated Voltage Regulator (AVR) for sags, spikes, under and over voltages
- Cold start to switch on the UPS without mains
- Wide input voltage and frequency range, for a longer battery life
- Easy battery replacement
- Plug-in charging - UPS charging battery even when turned off
- Automatic battery test
- Smart battery management system enhancing battery life
- Downloadable monitoring Software (Emily) with event-data log. To protect your PC by shutdown no need for to
- USB connection port
- 2 years EU warranty on UPS

## OPTIONS



- Communication cable
- Carton gift box customization
- RS232 Port
- Many front and back panel customization possibilities
- RJ45 surge protection for telephone lines

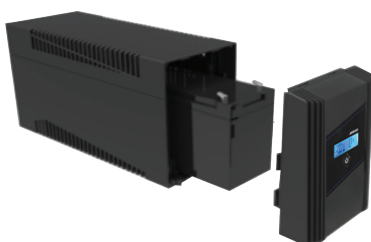
## WHAT'S IN THE BOX



- Input power cable
- Output power cable

## EASY BATTERY REPLACEMENT

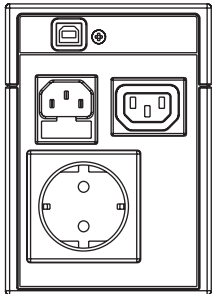
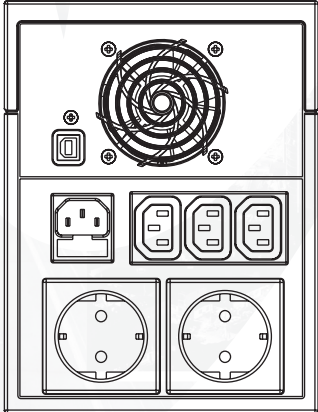
GR 450-650-850



GR 1000-1500-2000



# SPECIFICATIONS

MODEL		GR450 LCD	GR650 LCD	GR850 LCD	GR1000 LCD	GR1500 LCD	GR2000 LCD
INPUT	Voltage Range	160Vac~290Vac					
	Frequency Range	45~65Hz (Auto sensing)					
	Phase	Single Phase					
OUTPUT	Capacity	270W	380W	500W	600W	900W	1200W
	Output Voltage (Battery mode)	220/230/240Vac ±10%					
	Frequency Range (Battery mode)	50/60Hz ±1Hz					
	Transfer Time	2~6ms (typical)					
	Output Waveform	Simulated SineWave					
PHYSICAL	Dimension (WxD, mm)	100 x 140 x 292			148 x 198 x 315		
	Net Weight (kg)	4	5	5.5	9	10.5	11.8
BATTERY	Type & Number	12V/5Ah x 1	12V/7Ah x 1	12V/9Ah x 1	12V/7Ah x 2	12V/7Ah x 2	12V/9Ah x 2
	Recharge Time (to 90%)	4~6 hours					
DISPLAY	LCD	AC mode, AVR mode, battery mode, battery level, load level, input voltage, output voltage, fault and battery weak					
ALARM	Audible or Visual	Battery mode/ battery low/ overload/ system fault					
PROTECTION	Full protection	Overload, short circuit, discharge, overcharge and optional RJ-11/RJ-45 surge protection					
FUNCTION	DC Start	Yes					
	Plug-in charging	Yes					
ENVIRONMENT	Operation Temperature	0~40°C					
	Operation Humidity	0%~90% (without condensing)					
	Altitude	1000m without derating					
	Noise Level	≤ 40dB					
INTERFACE	Interface	USB (optional RS232)					
	Compatible platforms	Microsoft Windows series, Linux, Mac					
STANDARDS & CERTIFICATIONS	Safety & EMC	IEC EN 62040-1, IEC EN 62040-2					
	Performance	IEC EN 62040-3					
	Marks	CE					
BACK PANELS	<div style="display: flex; justify-content: space-around; align-items: center;"> <div style="text-align: center;"> <p>GR 450/650/850</p>  </div> <div style="text-align: center;"> <p>GR 1000/1500/2000</p>  </div> </div>						

Specifications subject to change without notice