

6-GFMHR Series

High Rate Battery

HELIOS
POWER SOLUTIONS

Benefits

- 15 years design-life
- Typically for UPS with short runtime
- High consistency, security, reliability and stability
- Fast recharge and low self-discharge rate
- Good high-current performance
- Good deep-discharge performance
- Withstands short-term overcharging
- Excellent anti-vibrant performance

Technical Features

- State of art manufacturing results in battery consistency
- High-strength ABS material and patented sealing technology ensures no leakage, expansion or rupture under normal use
- Corrosion-resistant alloy and stamping process greatly extend battery life



6-GFMHR series high-rate valve-regulated sealed lead-acid battery is a 12V battery specifically designed for the data centres, UPS and power systems.

The product is designed with special corrosion-resistant alloy and thin plate technology. Compared with ordinary batteries, it has a greater plate surface area, proprietary additives and combination of labyrinth pole seal technology result in longer life.

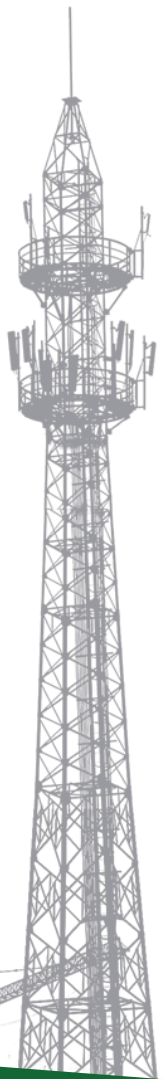
6-GFMHR Series

High Rate Battery

HELIOS
POWER SOLUTIONS



Specification



Model	Voltage (V)	C ₁₀ (Ah, 25°C)	15min@ 1.67V/cell (W, 25°C)	Dimension (mm)				Terminal	Torque (Nm)	IR (mΩ)	Weight (kg)
				L	W	H	TH				
6-GFMHR-320W	12	80	320	289	174	214	222	M8	15~17	3.8	26.5
6-GFMHR-390W	12	85	390	289	174	214	222	M8	15~17	3.4	28.5
6-GFMHR-440W	12	100	440	331	174	214	222	M8	15~17	3	32
6-GFMHR-500W	12	130	500	472	174	225	233	M8	15~17	2.8	42.4
6-GFMHR-550W	12	140	550	472	174	225	233	M8	15~17	2.5	44.5
6-GFMHR-630W	12	150	630	472	174	225	233	M8	15~17	2.2	46
6-GFMHR-700W	12	180	700	503	212	225	233	M8	15~17	2.2	58.1
6-GFMHR-750W	12	190	750	503	212	225	233	M8	15~17	2.1	60.5
6-GFMHR-800W	12	200	800	503	212	225	233	M8	15~17	1.8	61
6-GFMHR-350XW	12	90	350	395	110	286	286	M8	15~17	3.6	31
6-GFMHR-410XW	12	100	410	395	110	286	286	M8	15~17	3.4	33
6-GFMHR-500XW	12	140	500	549	110	310	310	M8	15~17	3.6	46.8
6-GFMHR-590XW	12	150	590	549	110	310	310	M8	15~17	3.3	49.5
6-GFMHR-630XW	12	180	630	559	125	315	315	M8	15~17	2.9	57.5
6-GFMHR-700XW	12	200	700	559	125	315	315	M8	15~17	2.8	60