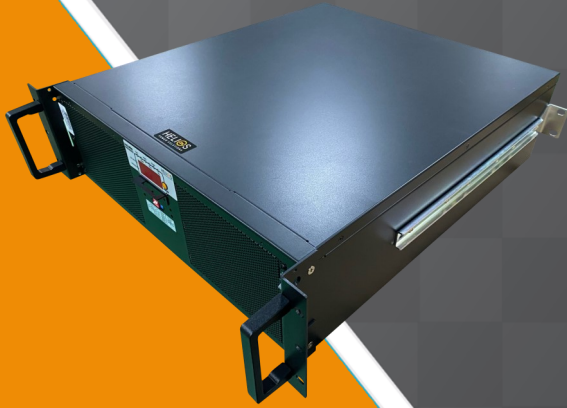


3U Rack Mount Inverter 5kVA

Main Features

- R Load Pure sine wave output (THD < 3%)
- LED display
- Power factor: 1
- 24V, 48V, 110V & 220VDC input voltage options
- 115VAC or 230VAC Output Voltage
- Static Transfer Switch Built-in
- Output frequency: 50 / 60Hz switch
- RS-232 interface / Wire connection to PC
- Relay Alarm Output
- Loading & Temperature controlled cooling fan
- -20 to +50C° Operating temperature range
- **Optional SNMP Management card**



RM-PSW5KVA(3U) 5000VA/3000W Series Pure Sine Wave Inverter

The **RM-PSW5kVA** Series are 2U Rack Mount 5kVA sine-wave inverters. 24/48/110/220VDC models with 220 or 110VAC output. The pure sine wave output is produced by a DSP controlled power circuit, using high power PWM, which allows efficiency higher than 94%, and very low distortion, even with reactive loads.

The voltage is user selectable: 220/230/240V RMS $\pm 3\%$, allowing for the best setting for customer equipment. In normal operation these inverters isolate the load from wide voltage swings, transients and noise usually present in the mains and which can cause equipment reliability problems. Output voltage and frequency are programmable from the front panel, as well as from the RS232 communications interface which can be used for remote monitoring.

The Bypass / Transfer function, allows for automatic transfer of the load (in the event of inverter or DC Failure) from the inverter to the utility AC supply, thus providing a high level of system reliability. With a range of protection features such as 'Auto shutdown' that prevents total battery discharge, and the extremely low input current draw when output is not powering equipment ensures maximum battery capacity at all times.

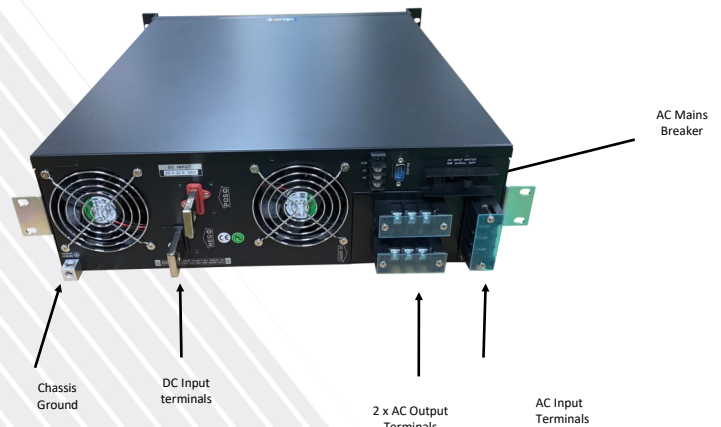
OPTIONS

- SNMP
- AC output sockets (just for models without SNMP)
- Terminal strip covers

* **Optional AC Output Terminals.** Universal, Australia-New Zealand, United Kingdom, North America, IEC60320-C13, AC Terminal Strip, IEC 0723-CQ. **If inverter is installed with SNMP, only the AC output terminal strip is available.** Some combinations are possible, contact our sales engineers for further information.

REAR PANEL DETAIL

Model with 2 X Output voltage Terminal Strip (without SNMP shown)



APPLICATIONS

- Computers, communications & control equipment, SCADA, test equipment, field instrumentation, factory automation systems, networking and telecom equipment.
- Power tools, drills, air compressors
- Lamps, fluorescent lights, vacuum cleaners, microwave ovens, refrigerators
- Televisions, home theaters, game consoles, satellite equipment.

Specification	220VAC Output Voltage Models			
Model Number	RM-PSW245KVAE(3U)	RM-PSW485KVAE(3U)	RM-PSW1105KVAE(3U)	RM-PSW2205KVAE(3U)
Output Power	5000W			
Surge Rating	10000W			
Input Voltage	24V	48V	110V	220V
Frequency	50/60Hz \pm 0.05% (Switch Selectable)			
Peak Output Current	45A			
Efficiency (full load)	90%	92%	94%	94%
No Load Current Draw	1.3A	0.68A	0.35A	0.18A
Output Waveform	R Load Pure Sine Wave <3% THD			
Output Voltage Adjustment	200~240V (Tune VR)			
Input Voltage Range	20-32VDC	42-62VDC	90-140VDC	180-275VDC
DC Input over voltage alarm	31VDC	61VDC	135VDC	270VDC
DC Input over voltage shut-down	32VDC	62VDC	140VDC	275VDC
DC Input under voltage alarm	21VDC	43VDC	95VDC	185VDC
DC Input under voltage shut-down	20VDC	42VDC	90VDC	180VDC
Protections	Overload, Short Circuit, Reverse Polarity (Fuse), Input Undervoltage, Input Overvoltage, Over Temperature			
Digital Display	Output Voltage, Output Current, Output Power, Output Frequency, Input Voltage, Temperature, Alarms			
Interface Control Port	RS-232C, Switch Selectable Baud Rate: 2400, 4800, 9600, 19200 (Switch Selectable)			
Alarm Relay	Rear panel alarm relay (NO, COM, NC) for DC Under or Overvoltage (Rated 250VAC 5A)			
SNMP	Optional			
Remote ON/OFF	Optional	Optional	Can't Support	Can't Support
Bypass (STS)				
AC Input Range	220VAC			
AC Input Frequency	(50Hz ~ 60 Hz) \pm 3%			
Transfer Time	4-6ms			
Physical				
Operating Temperature	-20°C to 50°C			
Storage Temperature	-30°C to 70°C			
Cooling	Temperature Controlled Cooling Fan			
Dimensions	504(L) × 425(W) × 132(H) mm			
Weight	19kg			
Available AC Output Sockets (options)	Universal, Australia-New Zealand, United Kingdom, North America, IEC60320-C13, AC Terminal Strip, IEC 0723-CQ * Some combinations are possible, ask our sales engineers for further information			
Compliance				
Safety	EN60950-1			
EMC	EN 55022: 2006, Class A EN 61000-3-2: 2006 EN 61000-3-3: 1995+ A1:2001+A2:2005			

Specification	110VAC Output Voltage Models			
Model Number	RM-PSW245KVA(3U)	RM-PSW485KVA(3U)	RM-PSW1105KVA(3U)	RM-PSW2205KVA(3U)
Output Power	5000W			
Surge Rating	10000W			
Input Voltage	24V	48V	110V	220V
Frequency	50/60Hz ± 0.05% (Switch Selectable)			
Peak Output Current	91A			
Efficiency (full load)	85%	87%	90%	92%
No Load Current Draw	1.64A	0.82A	0.42A	0.24A
Output Waveform	R Load Pure Sine Wave <3% THD			
Output Voltage Adjustment	100~120V (Tune VR)			
Input Voltage Range	20-32VDC	42-62VDC	90-140VDC	180-275VDC
DC Input over voltage alarm	31VDC	61VDC	135VDC	270VDC
DC Input over voltage shut-down	32VDC	62VDC	140VDC	275VDC
DC Input under voltage alarm	21VDC	43VDC	95VDC	185VDC
DC Input under voltage shut-down	20VDC	42VDC	90VDC	180VDC
Protections	Overload, Short Circuit, Reverse Polarity (Fuse), Input Undervoltage, Input Overvoltage, Over Temperature			
Digital Display	Output Voltage, Output Current, Output Power, Output Frequency, Input Voltage, Temperature, Alarms			
Interface Control Port	RS-232C, Switch Selectable Baud Rate: 2400, 4800, 9600, 19200 (Switch Selectable)			
Alarm Relay	Rear panel alarm relay (NO, COM, NC) for DC Under or Overvoltage (Rated 250VAC 5A)			
SNMP	Optional			
Remote ON/OFF	Optional	Optional	Can't Support	Can't Support
Bypass (STS)				
AC Input Range	110VAC			
AC Input Frequency	(50Hz ~ 60 Hz) ± 3%			
Transfer Time	4-6ms			
Physical				
Operating Temperature	-20°C to 50°C			
Storage Temperature	-30°C to 70°C			
Cooling	Temperature Controlled Cooling Fan			
Dimensions	504(L) × 425(W) × 132(H) mm			
Weight	19kg			
Available AC Output Sockets (options)	Universal, Australia-New Zealand, United Kingdom, North America, IEC60320-C13, AC Terminal Strip, IEC 0723-CQ * Some combinations are possible, ask our sales engineers for further information			
Compliance				
Safety	EN60950-1			
EMC	EN 55022: 2006, Class A EN 61000-3-2: 2006 EN 61000-3-3: 1995+ A1:2001+A2:2005			
EMC	EN 55022: 2006, Class A EN 61000-3-2: 2006 EN 61000-3-3: 1995+ A1:2001+A2:2005			