

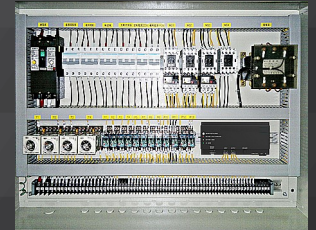


Din Rail AC UPS

Din Rail AC UPS combine easy operating design, multi-function operation and supports power protection on industrial equipment. Ideal for switchboard manufacturers and automation integrators which require compact and reliable AC backup.

Features

- Light weight and compact industrial design
- Din rail mounting design
- Wide operation temperature range (0-50°C)
- Remote on / off control
- Cold start capability
- Surge, overload, short circuit protection
- RS232 Communication Port
- SNMP Card / Modbus Card/ Dry Contact Relay Box (Option)
- 120VAC & 220VAC Output Options



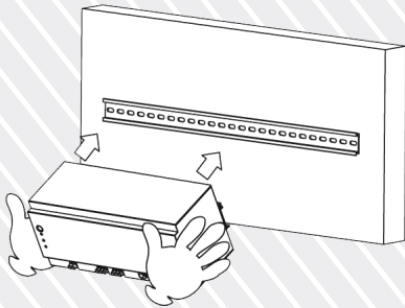
Power control cabinet

Applications:

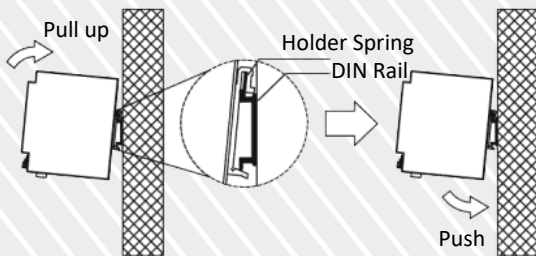
- Factory automation control system
- Robotic machine
- Conveying equipment
- Switchboard Manufacturers

Mounting & Removal

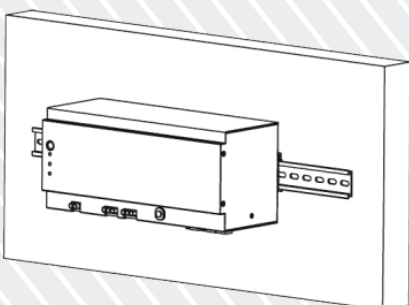
Step: 1



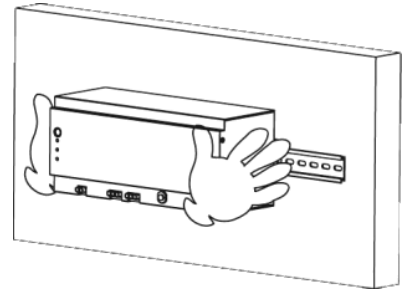
Step: 2



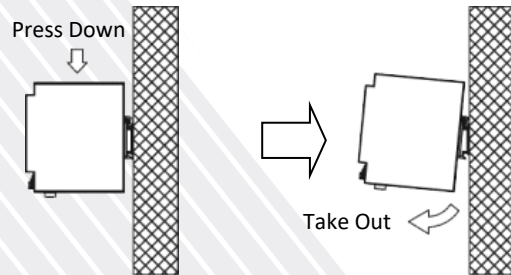
Step: 3



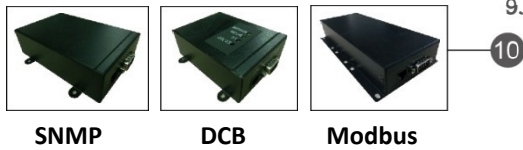
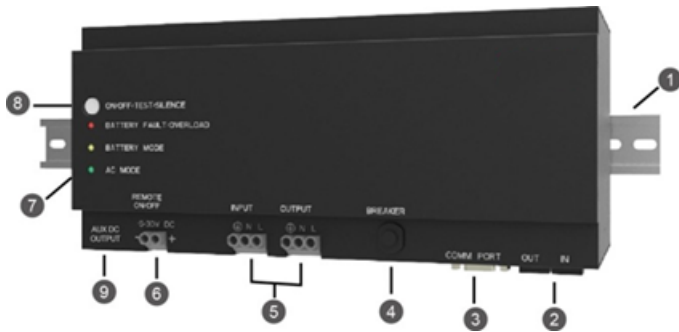
Step: 1



Step: 2



FRONT PANEL



1. Din Rail mount brackets
2. RJ45 / RJ11 Tel-communication protection
3. RS232 communication port
4. Input circuit breaker
5. Input / output screw connectors
6. Remote on / off connectors
7. LED indicators — Battery warning or overload indicator (Red) On battery mode indicator (Yellow) AC input (Green)
8. Power ON, OFF and Test bottom
9. AUX DC Output: Output DC power
10. SNMP card / Modbus card / Dry

Specifications

Model	DRU-500*	DRU-850
Configuration		
Capacity (VA)	500 VA	850 VA
Capacity (Watts)	300 W	510 W
Form	Din Rail mounting Type	
Input		
Voltage	100 / 110 / 120 VAC or 220 / 230 / 240 VAC	
Input Voltage Range	85 - 138 or 165 - 276 VAC	
Input Frequency Range	50 Hz / 60 Hz (Auto Sensing)	
Output		
Waveform	Simulated Sine Wave	
Voltage	100 / 110 / 120 VAC or 220 / 230 / 240 VAC	
Frequency	50 Hz / 60 Hz ± 0.3 Hz	
Transfer Time	2 - 4 ms (Typical)	
Full Protection	Overload, Surge, Short Circuit	
Communication	RJ11 / RJ45	
Battery		
Type	12V 7.2Ah	12V 9Ah
Quantity	1	1
Sealed, Maintenance Free	Yes	
Typical Recharge Time	8 hr to 90%	
Management & Communication		
Indicator	LED Panel	
Communication Port	RS232 (Option)	
Physical		
Dimensions (WxDxH) (mm)	119 x 282 x 124	
Weight (kgs)	4.3	4.9
Shipping Dimensions (mm)	243 x 381 x 231	
Shipping Weight (kgs)	5.1	5.7
Alarm		
Overload / Fault	Continuous Beeping	
Battery Mode	Beep every 4 seconds	
Low Battery	Beep every 0.5 second	
Environment		
Operating Humidity	0-90 % RH at 0-50°C (Non-condensing)	
Audible Noise	Less than 40 dB	

* MOQ applies, *500VA model available just for projects when quantity is considerable." Specifications are subject to change without further notice." Specifications are for reference, actual information should be based on real product